

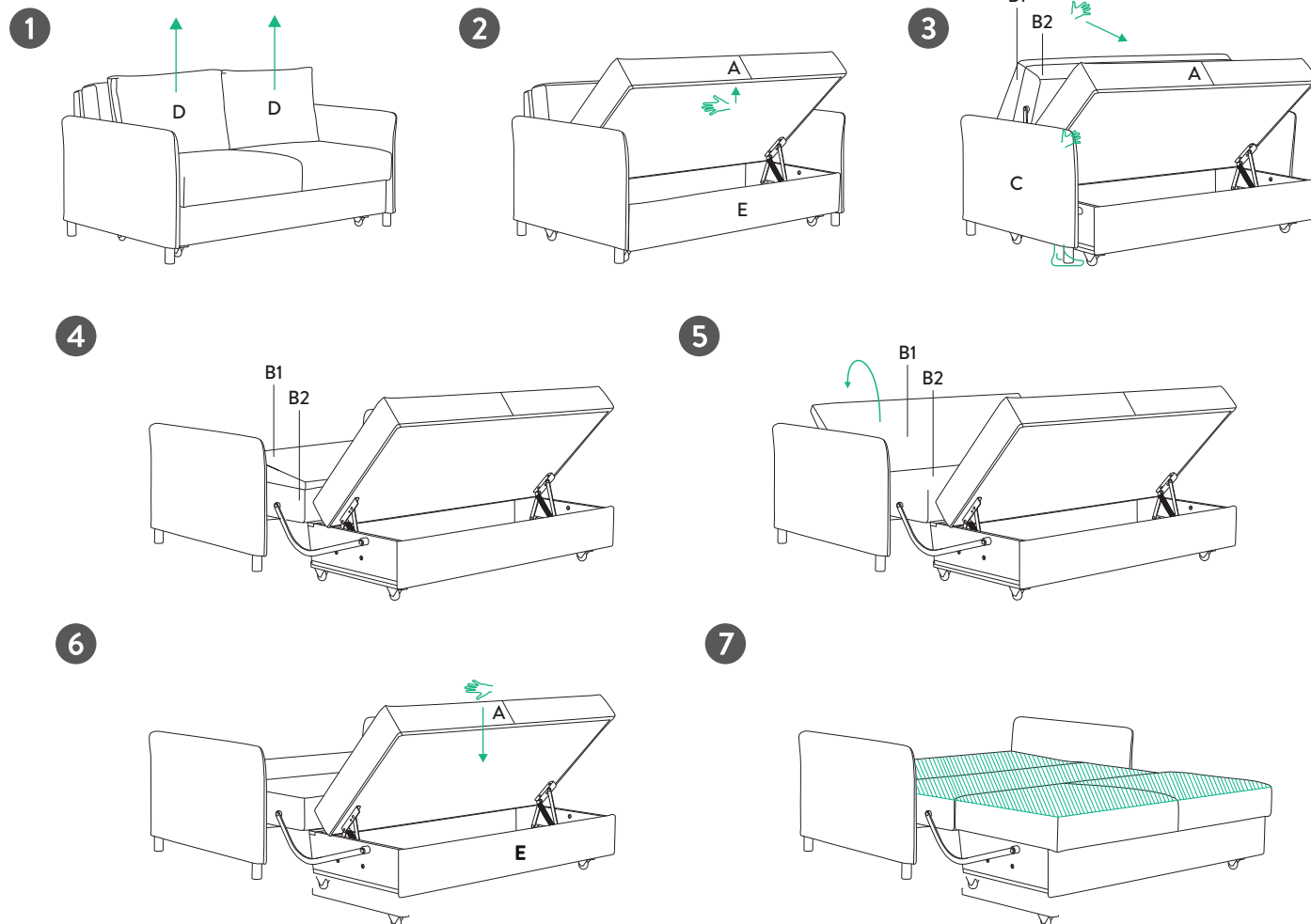
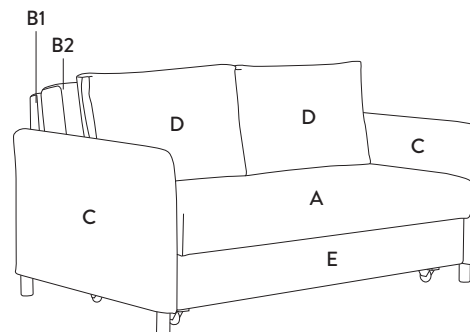
A - seat

B1, B2 - backrest

C - armrest (2 vnt.)

D - backrest cushion (2 vnt.)

E - bedding box



1. Remove the backrest cushions D.

2. Open the bedding box E by lifting the seat A upwards.

3. Pull parts B1, B2 towards the seat of the sofa A, leaning the leg against the front leg of the sofa or holding it with one hand behind the armrest C, while pulling the backrest with the other hand.

4. Sofa with reclined backrest.

5. Close the backrest part B1 backwards.

6. Close the bedding box by pushing the seat A downwards.

7. The sofa is ready for sleeping. When transforming the sofa from the lying position to the sitting position, all steps are repeated in reverse order.

