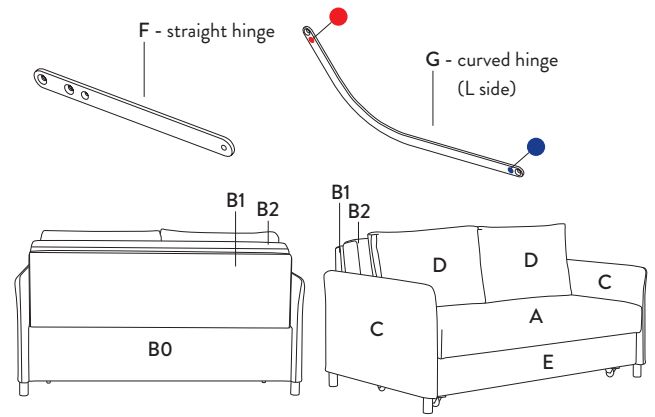
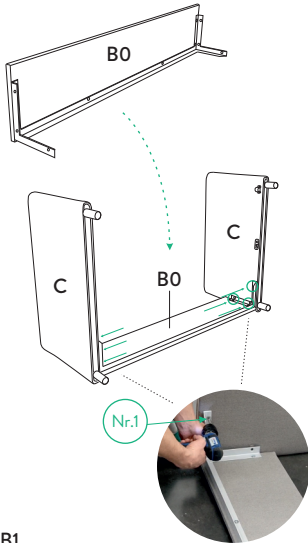


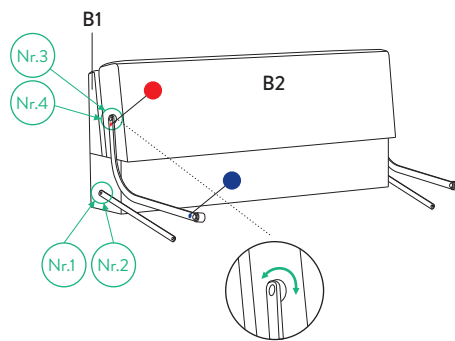
- |                               |                                     |
|-------------------------------|-------------------------------------|
| A - seat                      | No. 1 - screw M8x20 (10 pcs.)       |
| B0 - backrest support board   | No. 2 - wood screw 5x40 (2 pcs.)    |
| B1, B2 - backrest             | No. 3 - black spacer D30x8 (2 pcs.) |
| C - armrest (2 pcs.)          | No. 4 - screw M8x50 (2 pcs.)        |
| D - backrest cushion (2 pcs.) | No. 5 - spacer D8 (4 pcs.)          |
| E - bedding box               | No. 6 - screw with plastic (4 pcs.) |
| F - straight hinge (2 pcs.)   | No. 7 - black spacer 30x25 (2 pcs.) |
| G - curved hinge (2 pcs.)     | No. 8 - screw M8x60 (2 pcs.)        |
| (L and R sides)               |                                     |



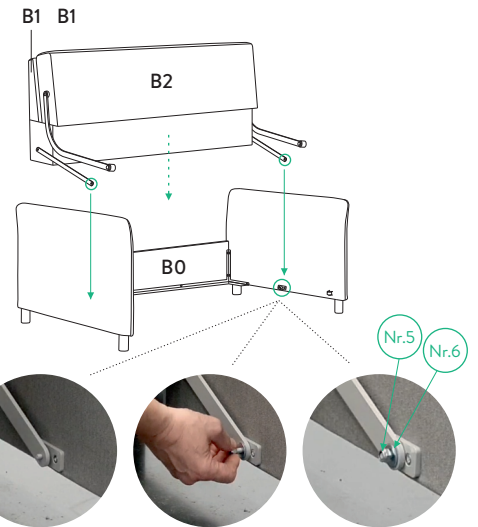
1



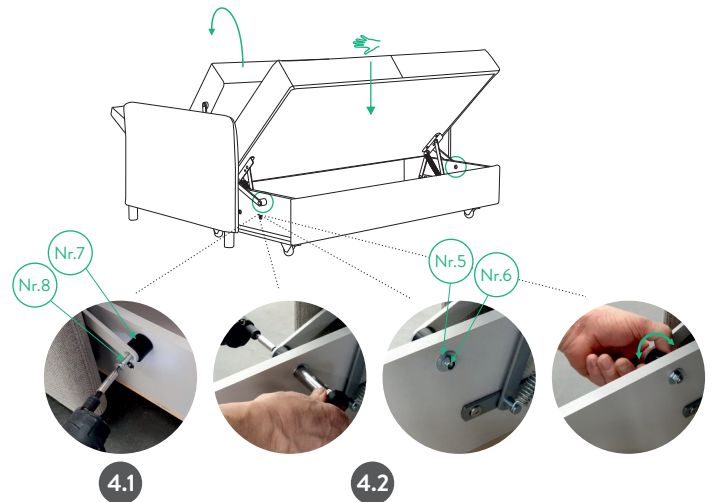
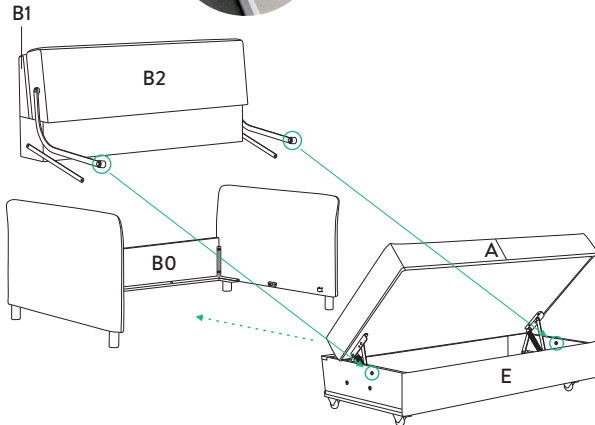
2



3



4



1. Secure the armrests **C** by fastening them with screws **No. 1** to the backrest support board **B0**.

2. Attach straight hinges **F** to the bottom of the backrest by screwing wood screws **No. 2** and screws **No. 1** from both sides, and attach curved hinges **G** by inserting screw **No. 4** through the hinge (the hinge attachment point is marked with a **red sticker**) and black spacer **No. 3** so that the black spacer **No. 3** can rotate easily back and forth.

3. Place the backrest **B1, B2** on the backrest support board **B0** and secure it to the armrests **C** using spacers **No. 5** and screws with plastic **No. 6**, leaving some space.

4. Insert the seat **A** with the opened bedding box **E** between the connected parts of the furniture and attach the curved hinges **G** to the bedding box **E** from both of its sides:

4.1. Attach the hinges first to the outside of the bedding box **E** by partially screwing screw **No. 8** through the hinge (the hinge attachment point is marked with a **blue sticker**) and black spacer **No. 7**.

4.2. While supporting the outer screw **No. 8** from inside the box, tighten spacer **No. 5** and screw with plastic **No. 6** so that the outer black spacer **No. 7** can rotate easily back and forth.

4.3. Place the headrest cushions **D**.

Once the furniture is fully assembled, refer to the user manual for operation and transform the furniture into seating or lying positions.